

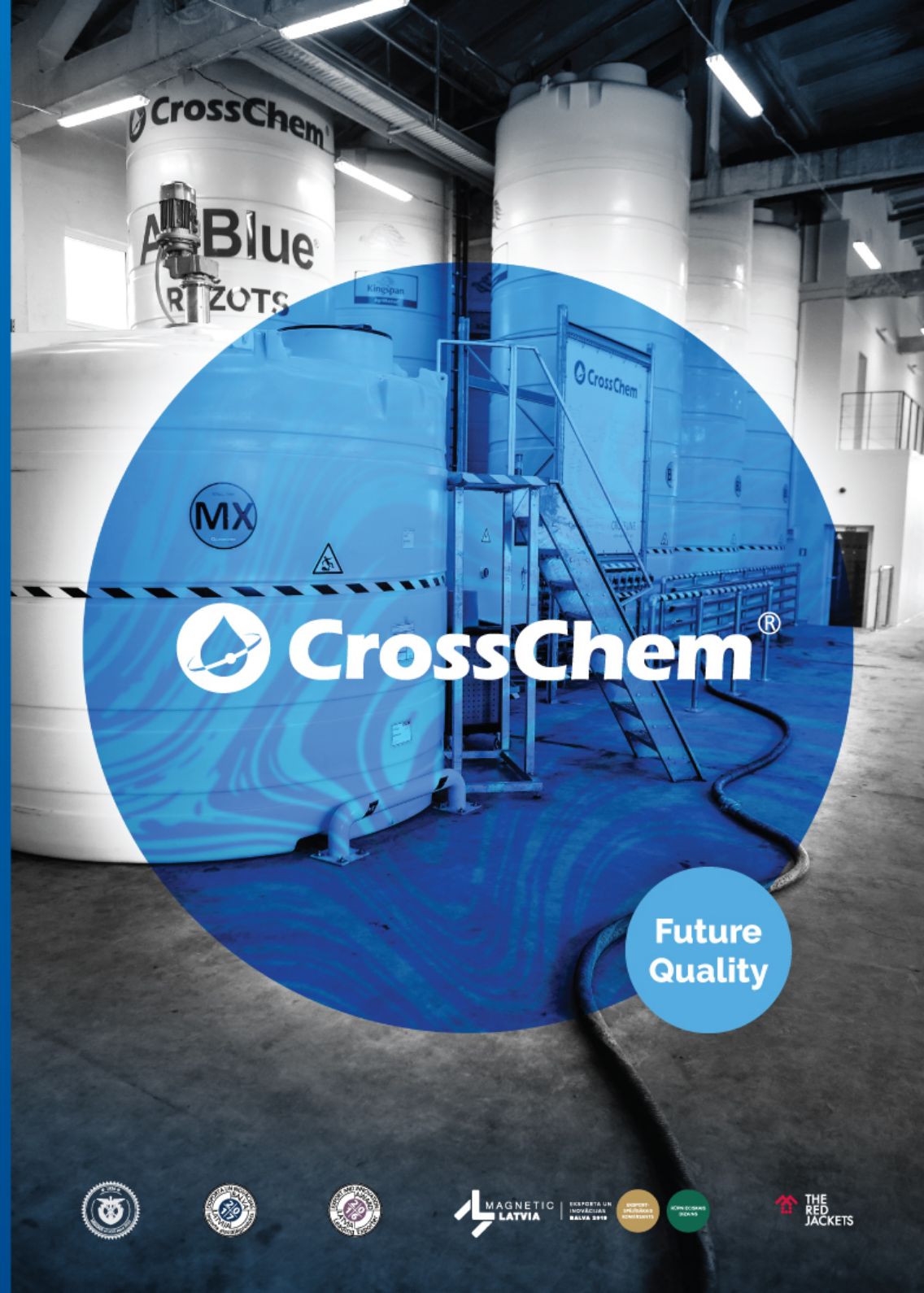


Future  
Quality



#### CrossChem Ltd.

V. VAT No 40003888244  
A. Naftatūka, Olaines novads, LV-2127, Latvia  
T. +371 67491030  
E. [info@crosschem.lv](mailto:info@crosschem.lv)  
W. [www.crosschem.lv](http://www.crosschem.lv)



 **CrossChem®**

Future  
Quality



INSTRUMENTAL  
INDUSTRIAL  
BALVA 2019

APRĀRST  
INSTRUMENTAL  
KONSTRUKT

KOPĀ DODĀMS  
PLAKĀT



## Automotive Chemicals

Production of AdBlue®, antifreeze and windshield washer fluid

## Petrol and chemical product filling stations

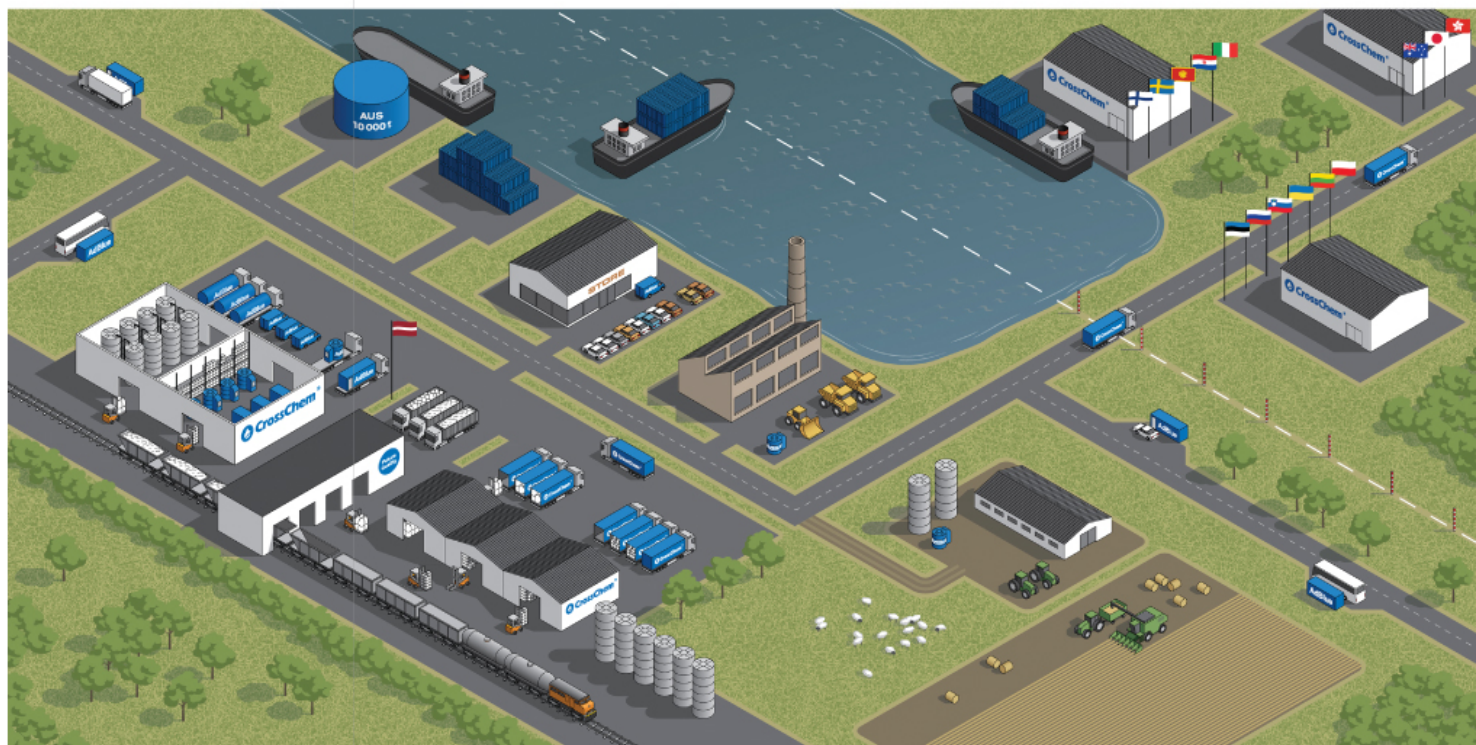
Distribution of stationary and mobile filling stations

## Cargo terminal and logistics

Railway bulk cargo handling, packing and storage services, transportation

## Establishment of AdBlue® production network

Production of products licensed in accordance with ISO 22241-1/-2/-3 standard and VDA (Verband der Automobilindustrie)



## CrossChem® representative offices

Finland  
Sweden  
Estonia  
Latvia  
Lithuania  
Slovenia  
Russia  
Ukraine

Poland  
Italy  
Croatia  
Montenegro  
Northern Macedonia  
Hong Kong  
Japan  
Australia

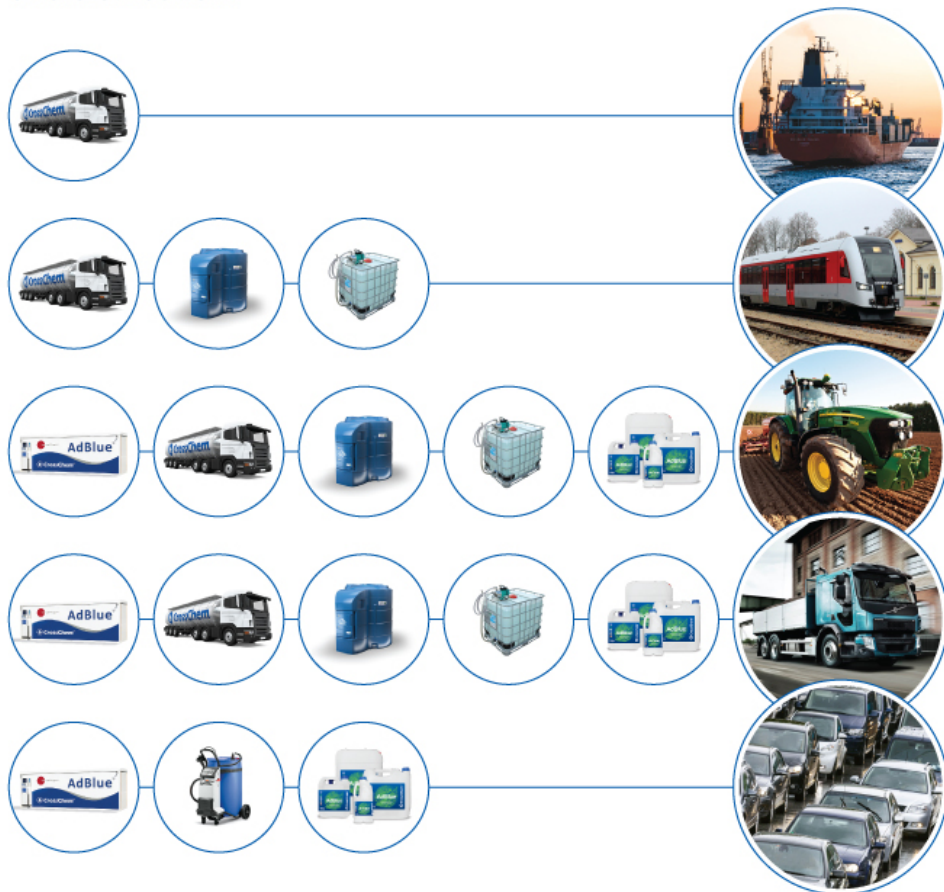




# AdBlue® delivery and storage for different types of transport



CrossChem® offers the widest range of services and products related to AdBlue® transportation, storage and distribution.



**VDA** | Verband der Automobilindustrie

AdBlue® is manufactured and packaged in Latvia in accordance with the VDA certificate. Each production batch is laboratory tested and samples are stored.



# AdBlue® CrossChem® filling points



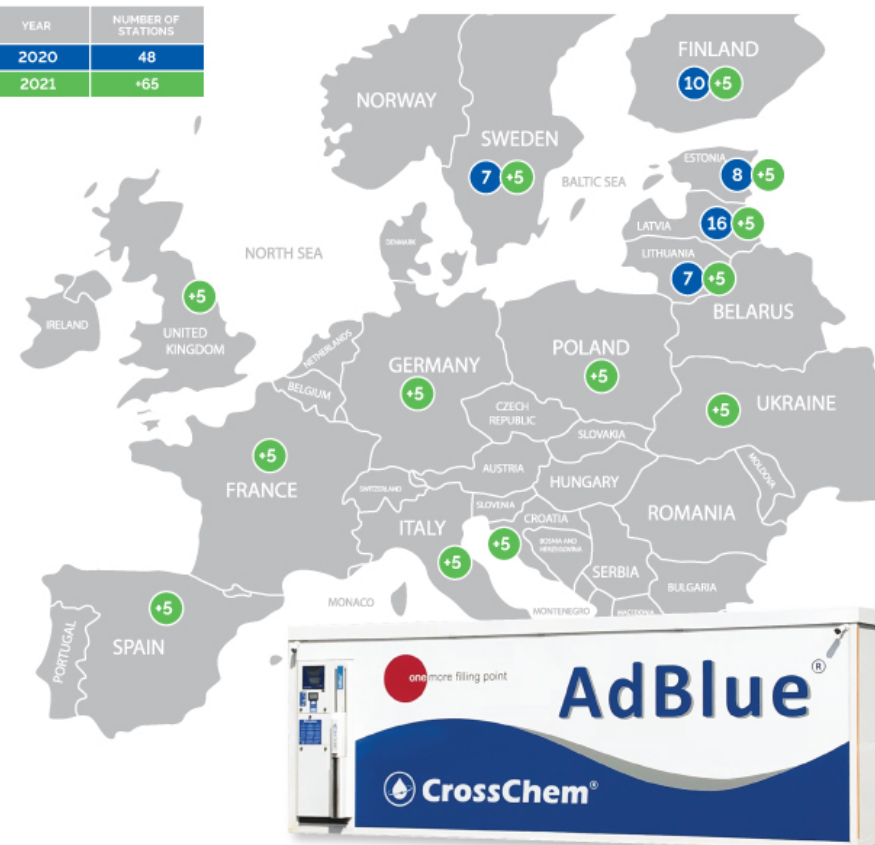
CrossChem® is the only AdBlue® plant in Latvia and the only one accredited AdBlue® plant in the Baltics.

CrossChem® is constantly evolving and improving its AdBlue® filling station network to provide its customers with the best AdBlue® filling experience.

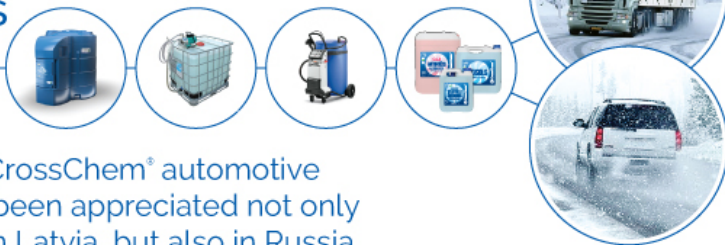
At CrossChem® filling stations you will always get the highest quality AdBlue® manufactured and stored in accordance with ISO 22241-1/-2/-3. Always fast, convenient and safe refilling at the best prices in Europe. No need to order, store or keep track of liquids.

CrossChem AdBlue® always on your way, available 24/7.

YEAR	NUMBER OF STATIONS
2020	48
2021	+65



## CrossChem® automotive chemicals



The quality of CrossChem® automotive chemicals has been appreciated not only by customers in Latvia, but also in Russia, Scandinavia and other European countries, using it in the harshest climatic conditions.

### Summer and winter windshield washer fluid

0°C / -2°C  
-12°C / -21°C / -30°C

CrossChem® windshield washer fluid provide our customers with quality windshield cleanliness, safe and comfortable driving and a pleasant smell.



### Antifreeze (G11) Antifreeze LongLife (G12) Antifreeze VCS Tosol

We produce a wide range of heat transfer products in accordance with the standards set by the automotive industry, we use high quality raw materials from leading chemical product suppliers.



#### Windshield fluids

VOLUME	PACKAGE
1000 litres	IBC container
650 litres	IBC container
210 litres	barrel
20 litres	can
10 litres	can
4 litres	can

#### Antifreeze

VOLUME	PACKAGE
1000 litres	IBC container
650 litres	IBC container
210 litres	barrel
20 litres	can
10 litres	can
4 litres	can
1 litre	can

## Heat carriers for heating systems



### Heat carrier

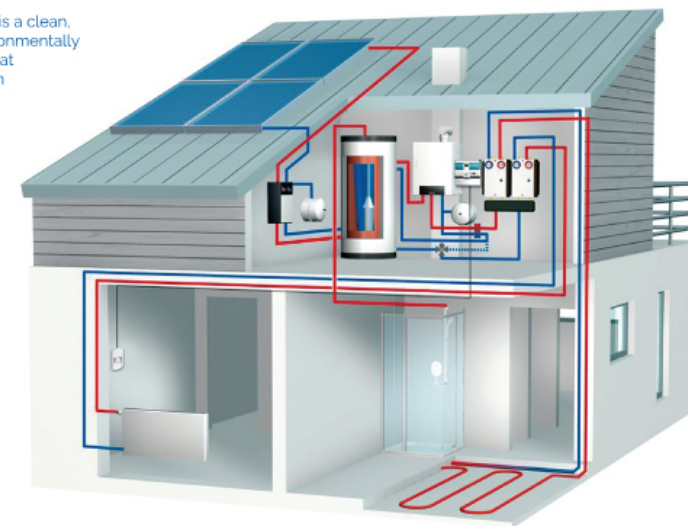
-20°C / -25°C / -30°C / -40°C

Ethylene glycol (heat carrier) is a cost-effective ethylene glycol-based product that provides at all climatic the longevity of the heat transfer system conditions

### Heat carrier ECO

-15°C / -20°C / -25°C / -40°C

Propylene glycol (heat carrier) is a clean, environmentally friendly, environmentally and human-friendly product that makes the heat transfer system more sustainable.



#### Heat carrier

VOLUME	PACKAGE
1000 litres	IBC container
650 litres	IBC container
210 litres	barrel
20 litres	can
10 litres	can
4 litres	can
1.85 litres	can



#### Heat carrier ECO

VOLUME	PACKAGE
1000 litres	IBC container
650 litres	IBC container
210 litres	barrel
20 litres	can
10 litres	can
4 litres	can
1.85 litres	can







## Anti-friction oil additive

CrossChem® has developed a unique ETEX® product. It is a tribological composition of the new generation for all vehicles and operational machines. The main objective of the product is to optimize the clearances within the joints, and reduce the friction of metals, thus eliminating the wear and tear of machine parts and reducing energy consumption.

### ETEX® characteristics

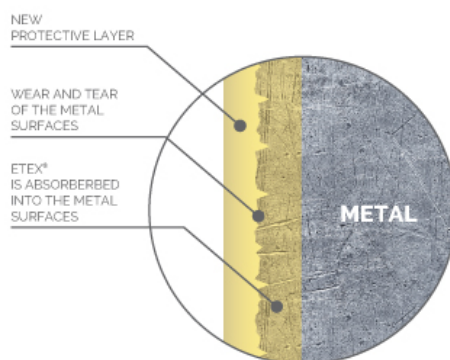
The product is developed based on minerals of geological origin, which is a thin multi-component mixture of silicates:

1. Has a layered structure
2. Contains about thirty components
3. Forms a new composite material
4. By its nature, it is not alien to metal
5. Has patented technology
6. Environmentally - friendly, biodegradable product
7. Can be used with any kind of oil and grease

A special ETEX® product formula is selected for each category of transport and machinery, which contains the required mineral concentration in order to obtain the best technological effect of the product. The conditions of use of the product must be carefully observed.

### ETEX® working principle

ETEX® is falling into the friction zone and clean the surfaces. The next phase is the release of minerals that fill previously formed gaps on metal structures, minimizing them, and in some cases bringing them to their nominal values. Eventually, it forms a new friction pair in the friction zone.



**FOR ALL TYPES  
OF PETROL AND  
DIESEL ENGINES**



**FOR INDUSTRIAL  
HYDRAULIC  
SYSTEMS**



AFTER TREATMENT WITH ETEX  
THE FULL EFFECT IS MAINTAINED  
IN THE FIRST 50,000 KM FOR VEHICLES  
OR 2000 OPERATING HOURS  
FOR MACHINERY AND EQUIPMENT



### ETEX® impact

- |  |  |
|--|--|
| ↑  INCREASES THE MOTOR RESOURCES OF MACHINES AND MECHANISMS  | ↓  REDUCES EXHAUST EMISSION                                      |
| ↑  RESTORES THE OPERATING PARAMETERS OF WORN EQUIPMENT       | ↓  REDUCES FUEL CONSUMPTION BY AN AVERAGE OF 10% (FROM 5% - 15%) |
| ↑  DOUBLES THE LIFE OF THE ENGINE OIL                        | ↓  REDUCES ELECTRICITY CONSUMPTION BY 8%-15%                     |
| ↑  INCREASE THE SERVICE LIFE OF GEAR OIL                     | ↓  REDUCES VIBRATION AND NOISE BY 30%                            |
| ↑  STABILIZES AND INCREASES THE COMPRESSION AND OIL PRESSURE | ↓  DECREASES WORKING TEMPERATURE                                 |
| ↑  INCREASES RESISTANCE TO CORROSION                         | ↓  REDUCES OPERATING COSTS                                       |



**FOR ALL TYPES  
OF VEHICLE  
TRANSMISSIONS**



**FOR INDUSTRIAL  
TRANSMISSIONS  
AND AXLE GEAR**



OIL VOLUME  
OF THE ENGINE

<8L <16L >16L



OIL VOLUME  
OF THE EQUIPMENT

<100L



OIL VOLUME  
OF THE TRANSMISSION BOX

<10L <30L



OIL VOLUME  
OF THE EQUIPMENT

<10L



## FuelMaster® stationary diesel storage and dispensing solutions

Certified according to  
ISO 9001:2008,  
ISO 14001:2004,  
BS OHSAS 18001:2007

Kingspan FuelMaster® products ensure safe storage, dispensing and protection of diesel fuel at the workplace.

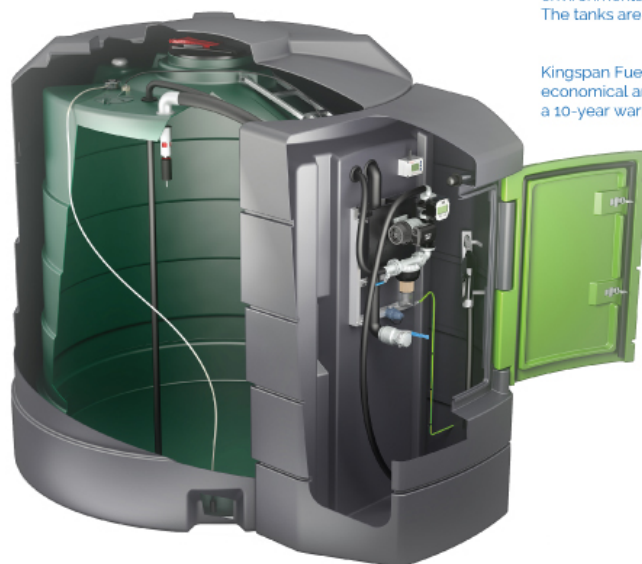
FuelMaster® tanks are suitable for the requirements of the agricultural, construction and transport industries. A solution for users who need a comprehensive platform to efficiently manage a large car fleet.

FuelMaster® tanks have double walls that provide environmental protection against pollution. The tanks are equipped with a lockable compartment.

Kingspan FuelMaster® provides customers with a quality, economical and compatible diesel storage solution with a 10-year warranty.

### Tank management and monitoring systems

FuelMaster® offers several unique tank monitoring and management systems, providing the information, transparency and control you need to keep your business running.



FM1200



FM2500



FM3500



FM4000



FM5000



FM9000



	1200 litres	2500 litres	3500 litres	4000 litres	5000 litres	9000 litres
CAPACITY	1200 litres	2500 litres	3500 litres	4000 litres	5000 litres	9000 litres
LENGTH	1900 mm	2460 mm	2850 mm	3900 mm	2850 mm	3280 mm
WIDTH	1240 mm	1460 mm	2200 mm	1200 mm	2230 mm	2450 mm
HEIGHT	1790 mm	1850 mm	1960 mm	2340 mm	2340 mm	2950 mm



## TruckMaster® mobile diesel storage and dispensing solutions

Certified according to  
ISO 9001:2008,  
ISO 14001:2004,  
BS OHSAS 18001:2007

TruckMaster® product range is specially designed for the safe transport of diesel fuel with filling equipment. Ensures refuelling at the workplace.

TruckMaster® tanks are suitable for use in agriculture, construction and forestry, they provide refuelling options at the workplace. Easy to move and safe solution for diesel fuel transportation. We offer tanks with 200L and 900L capacities and various specifications.

TruckMaster® tanks made of high quality polyethylene are resistant to structural damage, changing weather conditions and UV radiation. Approved and tested to meet the requirements of the European Agreement concerning the International Carriage of Dangerous Goods by Road (ADR).

We provide quality, cost savings and a compatible solution with technical and customer support.



TM200



TM200



TM300



TM430



TM900



	200 litres	200 litres	300 litres	430 litres	900 litres
CAPACITY	200 litres	200 litres	300 litres	430 litres	900 litres
LENGTH	600 mm	1180 mm	600 mm	1180 mm	1410 mm
WIDTH	800 mm	860 mm	800 mm	860 mm	1050 mm
HEIGHT	620 mm	550 mm	890 mm	910 mm	1210 mm
WEIGHT	33 kg	52 kg	45 kg	64 kg	97 kg





## BlueMaster® individual AdBlue® storage and dispensing solutions

Certified according to  
ISO 9001:2008,  
ISO 14001:2004,  
BS OHSAS 18001:2007

BlueMaster® and BlueMaster PRO® product range is specifically designed for the safe storage, dispensing and protection of AdBlue®.



### In a closed system

When stored in AdBlue® Kingspan BlueMaster® containers, it remains clean throughout the storage period. Cleanliness is ensured by a closed system of production and material quality, as well as the competence and knowledge of the Kingspan® manufacturer.

AdBlue® manufacturers confirm that Kingspan BlueMaster® closed systems are the best way to keep AdBlue® clean.

### Competence and knowledge

Kingspan® is an expert who has been developing and manufacturing storage solutions for various liquids for more than 40 years. For the past 10 years, they have worked with AdBlue® manufacturers to develop one of the safest and most environmentally friendly AdBlue® storage solutions.

### Individual approach

Various standard solutions and tanks, developed individually for the customer, will allow to adapt the equipment to the most demanding customer.

BM2500



BM3500



BM4000



BM5000



BM9000



	2500 litres	3500 litres	4000 litres	5000 litres	9000 litres
CAPACITY	2500 litres	3500 litres	4000 litres	5000 litres	9000 litres
LENGTH	2460 mm	2850 mm	3900 mm	2850 mm	3280 mm
WIDTH	1460 mm	2200 mm	1150 mm	2250 mm	2450 mm
HEIGHT	1860 mm	1960 mm	2340 mm	2350 mm	2950 mm



## SlimLine Edge 4500 litres AdBlue® storage and dispensing system

Certified according to  
ISO 9001:2008,  
ISO 14001:2004,  
BS OHSAS 18001:2007

SlimLine Edge offers revolutionary TriComp system for cleanliness and friendly design.

### Trust TriComp

The unique TriComp system offers a triple compartment design that provides three levels of absolute protection for your business and work environment.

### Filling station chameleon

One way to express your identity is colour. Kingspan® offers 5 standard colours, but we can develop an individual colour shade.



### Obvious difference

SlimLine Edge - iconic, durable, reliable and unique product. It offers harmony and excellence, along with Kingspan®. As a leading manufacturer of AdBlue® storage equipment, Kingspan® has more than 10 years of experience in developing and manufacturing innovative AdBlue® storage and distribution solutions.

The rich manufacturing experience and specialization of Kingspan® made it possible to create an excellent solution for the storage and distribution of AdBlue® - the new SlimLine Edge.



	4500 litres	INTEGRATED STORAGE TANK WITH DOSING SYSTEM	STORAGE CONTAINER WITH EMBEDDED DISTRIBUTION SYSTEM	STORAGE CONTAINER WITH EXTERNAL DISPENSING UNIT
CAPACITY	4500 litres			
LENGTH	3800 mm			
WIDTH	1140 mm			
HEIGHT	1860 mm			

## AgriMaster® tanks for liquid fertilizers

AgriMaster® – a reliable liquid fertilizer storage solution, 15 000 to 28 000 litre capacity.



Made of durable, non-corrodible polyethylene and high quality components, AgriMaster® provides absolute safety with a 10-year warranty

### The new AgriMaster® 28 000L

Offers high-volume liquid storage, ensuring the availability of liquid fertilizers in one convenient tank. Purchasing fertilizers in bulk will save time and money.



Certified according to  
ISO 22241  
BS EN ISO 9001:2008

#### MAIN BENEFITS

- Safe, durable and non-corrosive
- Independent availability of liquid fertilizers
- Easy to transport with a small mounting area
- Cost saving
- Resistant to structural damage, changing weather conditions and UV radiation
- 10-year warranty for tanks
- 2-year warranty for technical equipment

#### DOUBLE WALL TANKS



CAPACITY	22 000 litres	25 000 litres
DIAMETER	2480 mm	2480 mm
HEIGHT	5710 mm	6910 mm

#### SINGLE WALL TANKS



CAPACITY	15 000 litri	20 000 litres	22 000 litres	28 000 litres
DIAMETER	2350 mm	2480 mm	2480 mm	2480 mm
HEIGHT	2750 mm	4590 mm	4990 mm	6190 mm



## Accessories for diesel tanks



- 1 Equipment for the volume control of different types of liquids, using different types of level for measuring - infra-red sensor, capacitive level gauge and other handrails.
- 2 Kingspan Access - Intelligent tracking and distribution system. Works with GSM or WiFi networks. User identification with RFID magnetic contactless cards. The device is able to identify vehicles. Data storage in the cloud allows to receive information on spent fuel within an unlimited time interval. The device is a 'real-time' or 'Online' type device - all data is available immediately from any device connected to the Internet. Simple and convenient to use with numerous additional features.
- 3 Cube 70 MC or Multiuser - dispensing and accounting system. User identification with magnetic keys - chips. The device allows to store data on filling up the fuel, identifies refuelled vehicles and their drivers. Computer software allows to freely generate transparent reports on spent fuel.
- 4 Coil for fuel hose - available with hoses of different diameters and lengths.
- 5 Mechanical electronic and impulse meters. Provided for measuring antifreeze, fuel oil, diesel fuel, oil and other liquids with an accuracy of 0.5% -1%.
- 6 Various automatic and mechanical pistols for various fuels, as well as AdBlue® for use in vehicles.
- 7 Fuel pump Panther (PIUSI). Wing-type self-absorbent pumps for diesel fuel with the capacity of 56-120 L /min. The pumps have a built-in large debris filter. Electric power consumption 350-700 W.
- 8 Fuel filters - various types and models of filters for fuel and other fluids. Mechanical and water separating filters for diesel fuel available in metal or transparent housing.
- 9 Two-inch connection with ball valve for filling the tank from below or at working height. Absolutely safe and dry way to fill the tank. Equipped with a mechanic overflow system or safety valve that closes the supply system to prevent overfilling of the tank and possible air pollution.

## AdBlue® dispenser for passenger cars Delphin PRO (DC version)



Unique AdBlue® fluid filling for passenger cars. Filling capacity from 2-9 litres per minute. The built-in rechargeable battery is designed for charging 50 cars with only one charge. AF2 type safe connection for connection to the barrel. Digital litre counter. Universal ISO connection to the car tank equipped with self-cleaning system, hose length 2.9m. The unit is completely closed, does not cause unpleasant odours.

CEMO

## AdBlue®, diesel and petrol mobile storage devices on wheels



### AdBlue® trolley

AdBlue® for storage and transport. Available volumes 60 and 100 litres. Standard equipment includes a submersible electric pump 12V, 25 L/min or hand pump. 0.38 L/turn. For ease of filling, an automatic gun is installed. Built-in inertia controlled shock absorber.



### Diesel trolleys

For storage and transportation of diesel fuel. Available volumes 60 and 100 litres. Complies with ADR 113.1c. Polyethylene tank. Standard equipment includes electric pump 12V, 30 L/min or hand pump 25 L/min. Automatic gun installed for easy filling. Built-in inertia shock absorber.



### Gasoline trolley

For storage and transportation of gasoline. Available volumes 60 and 95 litres. Complies with ADR 113.1c. Tank made of high-density non-static polyethylene. Flame retardants installed. Filling opening cap with air valve. Dispensing hose with non-return valve. Models with hand pump available, 25 L/min and electric pump 12V, 25 L/min.



The latest and most modern  
bulk cargo handling and packing  
terminal in Latvia

## Receipt, handling, packaging and storage of loose bulk cargo

Complex (NPK) mineral fertilizers  
Simple potassium fertilizers  
Simple phosphorus fertilizers  
Simple nitrogenous fertilizers (excluding ammonium nitrate)  
Biological fertilizers  
Carbamide Technical salt Grains  
Wood pellets

## Terminal services

- Unloading of railway trucks indoors, placement on private access roads
- 24-hour professional physical security
- Customs clearance, brokerage and document processing
- Placing of prepacked or accepted materials for storage in closed or open type warehouses or loading in road transport, sea containers for further transportation
- 24-hour video surveillance with the ability to provide the customer with remote access to a video surveillance system to track the progress of re- loading
- Car weighing services



**50 t/h** unloading of loose bulk cargo from railway trucks  
or loading for road transport

**30 t/h** unloading and packing of loose bulk cargo  
from railway trucks in 500 or 1000 kg packages